



OAKMERE
A GAYNE & HOUGHTON COMPANY

Valley Road, Solihull

£315,000 Freehold

A Must-See Three Bedroom Home Offering Space, Style & Potential

Description

A fantastic opportunity to acquire this three-bedroom semi-detached home, ideally positioned on a popular residential road in Solihull, offering generous living space, a substantial rear garden, and excellent potential for both homeowners and investors alike.

Set back from the road, the property benefits from a spacious driveway providing ample off-road parking, along with access to a garage space, ideal for storage.

Internally, the property comprises a welcoming entrance hallway leading into a bright double bay-fronted living room, creating a warm and inviting space. To the rear, there is a separate family room and dining area, offering versatile living accommodation, alongside a fitted kitchen with direct access to the garden. A convenient ground floor WC completes the downstairs layout.

Upstairs, the property offers three well-proportioned bedrooms, including two generous doubles and a third bedroom, currently utilised as a bedroom, also ideal as a nursery, home office or dressing room. A family bathroom serves all bedrooms.

Externally, the property boasts a generous rear garden, mainly laid to lawn, providing the perfect setting for families, entertaining, and future improvement.



Requiring some cosmetic updating, this property presents an excellent opportunity to modernise and add value, making it an ideal purchase for first-time buyers, growing families, or investors seeking a strong long-term return.

Situated within close proximity to local amenities, well-regarded schools, and excellent transport links, this is a superb opportunity not to be missed.

Council Tax Band: C

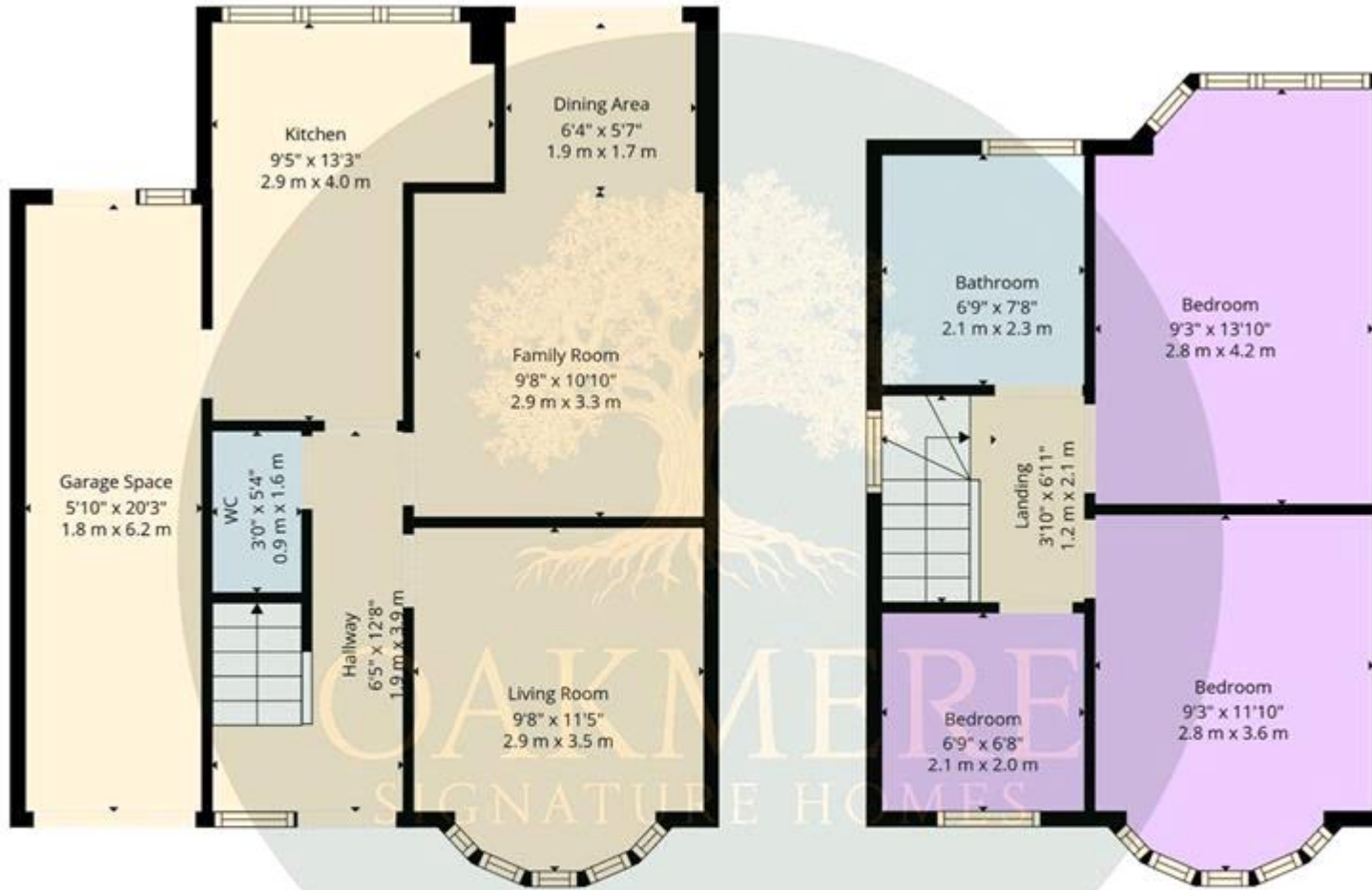
Tenure: Freehold

Parking options: Driveway

Garden details: Rear Garden

Tenure

Freehold



1st Floor

2nd Floor

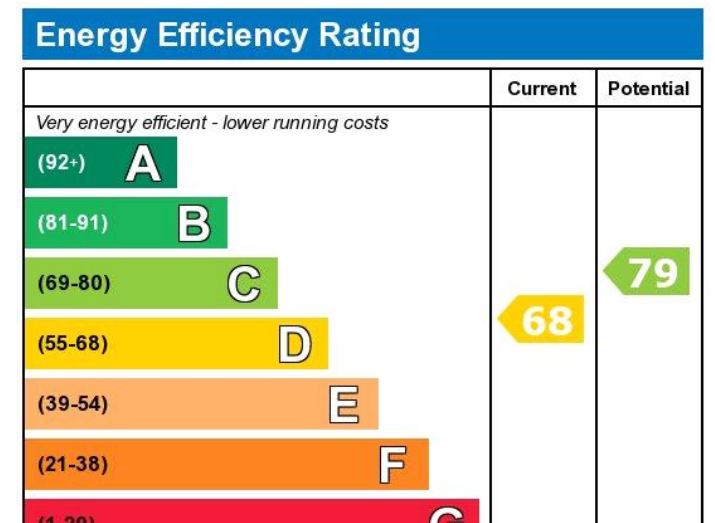
TOTAL: 830 sq. ft, 77 m2

1st floor: 446 sq. ft, 41 m2, 2nd floor: 384 sq. ft, 36 m2

EXCLUDED AREAS: GARAGE SPACE: 119 sq. ft, 11 m2, WALLS: 78 sq. ft, 8 m2

Floor Plan Created By Calcsite App. Measurements Deemed Highly Reliable But Not Guaranteed.





Viewing by appointment only
 Oakmere Signature Homes Ltd - Head Office
 Friars House, Manor House Drive, Coventry, West Midlands CV1 2TE
 Tel: 02477360410 Email: gurpal@oakmeresignaturehomes.com Website:

